

# Explore different pathways and qualification routes

## Worksheet

### Learning Outcomes

This activity will help you to:

- find out more about post school options
- navigate the job profile on My World of Work
- create and bookmark qualification routes
- understand that there can be different routes into careers
- find out more about learning options

### Activity

#### Introduction

This activity will help you to research different post school options and qualification routes into jobs.

On My World of Work, you can create route maps for jobs. Route maps will show you the various qualification steps you can take to progress into the job of your choice.

You will be able to see the range of routes available and can also research learning options.



#### Instructions

- ★ Sign into your **My World of Work** account [www.myworldofwork.co.uk](http://www.myworldofwork.co.uk)
- ★ If you do not have an account, click 'register' at the top right-hand side of the page. If you need help to do this, watch this **video** on how to register



### Task 1: What are my post school options?

- ★ What could be your next step after school?
- ★ Think about the different options that are available for school leavers
- ★ Click on the links below to find out more about some of the options available:

[Option 1](#)

[Option 2](#)

[Option 3](#)

[Option 4](#)

\*full web addresses for options 1–4 are available below



### Task 2: Researching career options by exploring job profiles

- ★ Click on the 'My career options' section in My World of Work
- ★ If you have completed any of your core tools (About Me, Strengths and Skills Explorer), you can pick a job profile to explore from 'View your career suggestions'
- ★ Alternatively, you can search for job profiles, using the **I have a career in mind** tab
- ★ Now that you have selected a job profile, scroll down until you reach the section 'Create a qualification route'
- ★ You can use the 'Exploring qualification routes guide' below to help you
- ★ Select 'Discover my route' and work through the qualification route
- ★ Once you have completed your route you can print it or 'Bookmark' it into your account
- ★ You can also select 'Restart' to explore alternative routes
- ★ Were you aware of the different routes available? Anything that surprised you?
- ★ Want to research another job? Why not check out some other job profiles?



### Tips to help you

- ★ Take time to consider the different routes on offer (vocational qualifications as well as academic ones)
- ★ Once you have completed your route, you can click 'Find a course' on your route map to find out more about local learning opportunities outside of school
- ★ Some job profiles may not have a qualification route. Look at the 'Getting in' section of this job to find out more

**Continues on next page...**

## Next

You can continue to explore My World of Work.

Why not search for information on courses and/or volunteering options in the **Learn and train** section on the site.

You can also explore current vacancies and how to apply for them in the **Getting a job** section.

## Web addresses for post school options

Option 1: <https://www.myworldofwork.co.uk/college-and-university-0>

Option 2: <https://www.myworldofwork.co.uk/my-career-options/employment-options>

Option 3: <https://www.myworldofwork.co.uk/apprenticeships-0>

Option 4: <https://www.myworldofwork.co.uk/learn-and-train/volunteering>

**Guide on next page...**

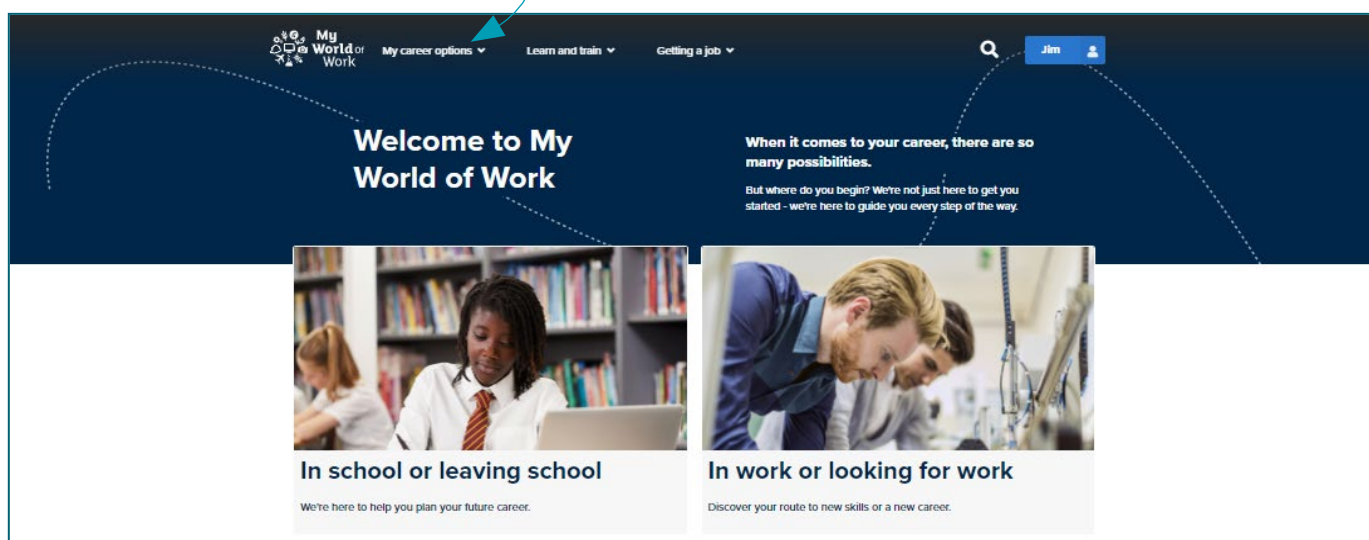
## Exploring qualification routes - Guide

- ★ Use My World of Work to help you learn how to create route maps for jobs
- ★ In this activity you can find out about qualifications you'll need for the jobs you are interested in
- ★ Route maps will show you the various qualification steps you can take to progress into the job of your choice
- ★ Sign in to your My World of Work account to bookmark your results

**Note:** the pictures in this guide show what My World of Work looks like on a computer screen. If you use a mobile device, for example your phone or a tablet, My World of Work will look different and things may be in different places on your screen.

1. From the Home page, hover over “My career options” A pop up menu will appear
2. Select “Go to section” on this menu

My career options



Continues on next page...

3. This will take you to the My career options screen. Here you can see the core tools you have completed on My World of Work

The core tools are About Me, Strengths and Skills Explorer

- You will need to complete at least one of these to be able to select the 'View your career suggestions' option. This lets you look at job profiles that match the results from your core tools
- If you want to view all job profiles, click on the "I have a career in mind" tab. You can then search using a key word, look through an A-Z list or view job categories

The screenshot shows the 'Personalise your account' section of a website. At the top, there are three tabs: 'Give me ideas', 'I have a rough idea', and 'I have a career in mind'. The 'I have a career in mind' tab is selected and highlighted with a blue box and an arrow pointing to it from the text 'I have a career in mind'. Below the tabs, the main heading is 'Personalise your account'. Underneath, it says 'Select one of the sections below to get started. The more you complete, the better career suggestions we can give you.' There are three cards: 'About me' with a heart icon, 'Strengths' with a star icon, and 'Skills Explorer' with a pencil icon. Each card has a checkmark in the bottom right corner. Below the cards, it says 'Now that you've completed 3 sections you can see your personalised career suggestions. These are based on your skills, interests and strengths. Complete all of the sections to get the best matches.' To the right of this text is a purple button that says 'View your career suggestions >'. A blue box with the text 'View your career suggestions' and an arrow points to this button.

Continues on next page...

4. The 'View your career suggestions' gives you a list of job profiles. These are based on the results of the core tools you have completed. The job profiles will be better matched to you if you complete all three core tools.
5. You can click on various job profiles to find out more
6. Select a job profile you would like to find out more about

Show results that match my...

About me

Strengths

Skills Explorer

[Edit my profile >](#)

### Job profiles

141 results



#### Accommodation warden

Facilities and property services  
Support people who stay in sheltered housing, youth hostels and student residences and make sure the building is safe and clean for them.



#### Aerospace engineer

Engineering  
Design and build aeroplanes, helicopters, spacecraft, satellites, missiles and rockets to make them safe and efficient.



#### Agricultural consultant

Animals, land and environment  
Provide technical, business and financial advice and information to farmers, landowners and other agricultural staff.



### Industries

11 results



#### Chemical sciences

Make life-saving drugs or the fuels of the future.



#### Construction

The construction industry lies at the heart of Scottish society. Learn more about how you can become part of this thriving workforce.



#### Creative

Got big ideas? Put them into practice by becoming a producer, a sound engineer, a designer... your horizons are as broad as your imagination.



[View all industries >](#)

**You can click on a job profile title to see more information**

- ★ Job profiles show details of the role and working conditions, together with salary, employment figures and related careers
- ★ Some job profiles let you build qualification routes to the job



**Continues on next page...**

7. Clicking on “Discover my route” will allow a series of qualification options to be selected

## Construction manager

**Alternative job titles:** site manager, site agent

**Job category:** [Construction and building](#)  
**Pathways:** [Support](#)

 Remove Bookmark  
 Share

### Career outlook for construction manager

<h4 style="margin: 0;">UK Salary Ranges</h4> <table style="width: 100%; border-collapse: collapse;"> <tr> <td style="text-align: center; border-right: 1px solid white; padding: 5px;">Entry-level</td> <td style="text-align: center; padding: 5px;">Experienced</td> </tr> <tr> <td style="text-align: center; border-right: 1px solid white; padding: 5px;">£27,000</td> <td style="text-align: center; padding: 5px;">£65,000</td> </tr> </table>	Entry-level	Experienced	£27,000	£65,000	<h4 style="margin: 0;">Currently employed in Scotland</h4> <p style="font-size: 24px; margin: 0;">12,900</p>
Entry-level	Experienced				
£27,000	£65,000				

Salary information is provided by the "National Careers Service". "Oxford Economics" supplies job forecasts and employment figures. Due to COVID-19 the jobs market is constantly changing. Some of the information may not reflect the current situation.

### What's it like?

You would supervise and direct operations on a construction project to make sure the building or structure is completed safely, on time and within the budget.

You'd manage the project on behalf of another company, your client. You'd lead and motivate the construction team and sort out any problems that arise during the project.

On small sites you might have full responsibility for the whole project. On larger sites you may be in charge of a particular section and report to a senior site manager.

Before the building work starts, you would:

- Discuss plans with architects, surveyors and buyers
- Plan work schedules using project management software
- Hire employees
- Arrange for materials to be delivered to the site
- Set up temporary offices at the site

Once construction has started, you would:

- Work closely with the workforce on site
- Check progress, costs and quality
- Make sure the work meets legal requirements and building regulations
- Report regularly to your client

You would also be the main point of contact for subcontractors and the public.

As a senior manager, you could oversee several projects at the same time.

### Working conditions

#### Hours

You would work around 40 hours a week, Monday to Friday, possibly with some evening or weekend work to meet deadlines.

#### Environment

Site work would be in all weather conditions. You may sometimes have to work at heights, for example when inspecting roofing. You would wear protective clothing on site, including safety boots and a hard hat.

#### Travel

Some of your time would be spent travelling between sites and meeting clients and contractors.

### UK employment status

Full-time	Part-time	Self employed
69%	7%	24%

### Create a qualification route

We've found some examples of the qualifications that could help you get this job.

[Discover my route](#)

Discover my route

Continues on next page...

8. Select your preferred qualification option. Then, you'll find out what the next steps on your qualification route could be

**Your route to:**

**Construction manager**

**Your route**

**National 5**

**Restart**

**Foundation Apprenticeship**

Civil Engineering

SCQF 6

View more ▼

**Higher**

SCQF 6

English and Maths, as well as science and technology subjects, may be useful.

View more ▼

**National Certificate Level 6**

Built Environment

SCQF 6

View more ▼

**Qualifications you select will be displayed here**

**Choose your qualifications**

Continues on next page...



9. Work through the different levels of qualifications needed for the job
- ★ Take time to consider the different routes on offer (vocational qualifications as well as academic ones)
  - ★ You can see information about some of the qualifications

**Modern Apprenticeship Level 3**

Construction: Technical

SCQF 6/7

View less

Modern Apprenticeships (MAs) are a job where, as well as earning a wage, you'll study towards a qualification. You need to be 16 to become a Modern Apprentice. The length of an MA varies depending on your previous skills and the type of apprenticeship. Employers will have their own entry requirements but will generally take into account experience alongside any formal qualifications.

[Find an apprenticeship](#)

Select to view more

10. Once you have completed the qualification route you can see your route map or start by selecting "Restart"

**Your route to:**

Construction manager

**Your route**

- National 5
- Higher
- Construction Management Honours Degree

[Restart](#)

Well done! You've reached the end of your route.

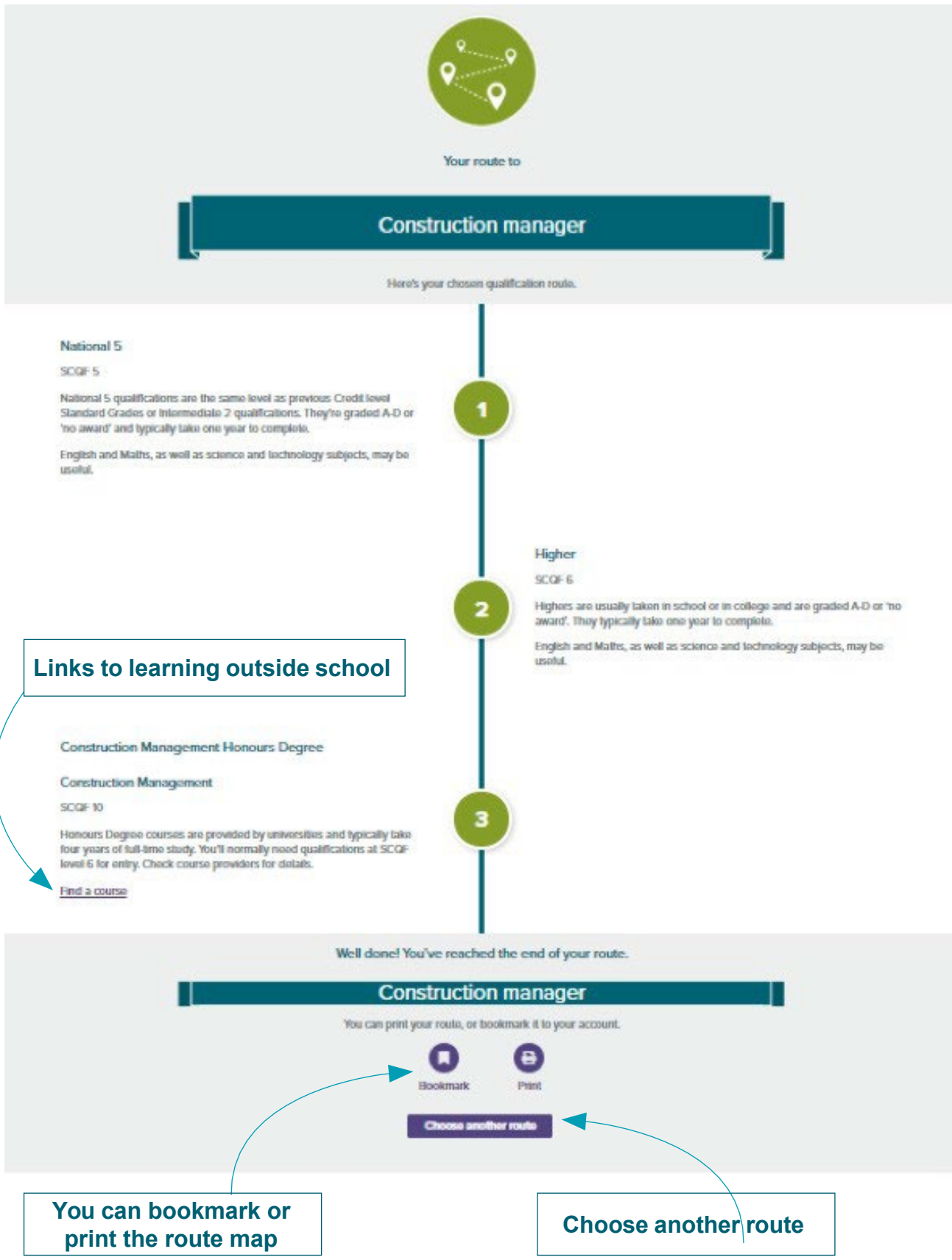
[See your route map](#)

Restart

See your route map

Continues on next page...

- ★ By selecting “See your route map” this will produce a complete route map like the one below



Continues on next page...

11. Click 'Find a course' on your route map to find out more about local learning opportunities outside of school

★ You can bookmark route maps to your account or print them