

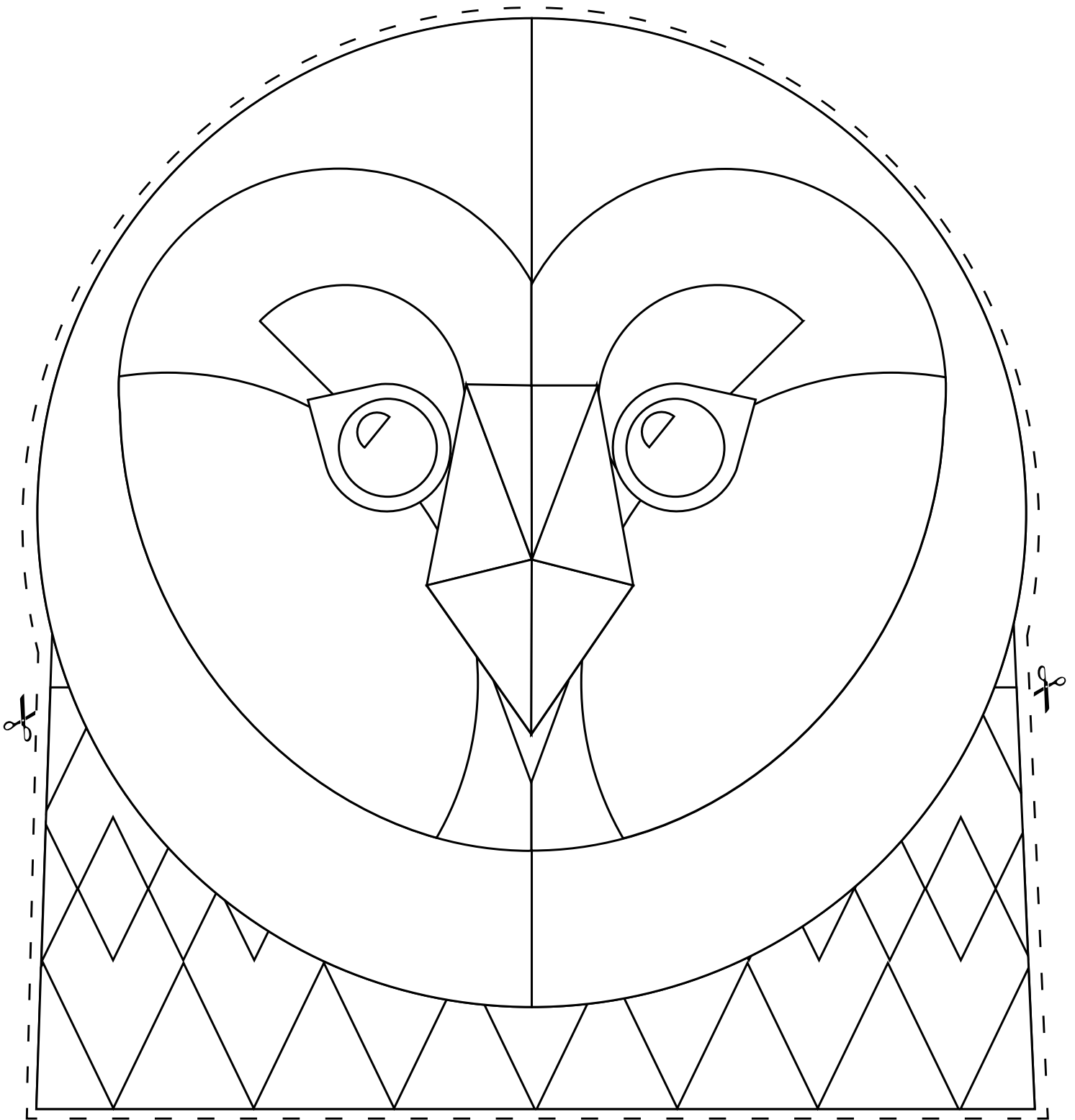


You will need:

- Colouring in pens, pencils or crayons
- Scissors
- Glue
- A4 sheet of cardboard
- Paper straw or lolly stick

Instructions:

- 1 Colour in your animal
- 2 Stick your animal to your sheet of cardboard
- 3 Cut along the dotted lines
- 4 Once cut out, use tape to secure your animal to a straw or lolly stick



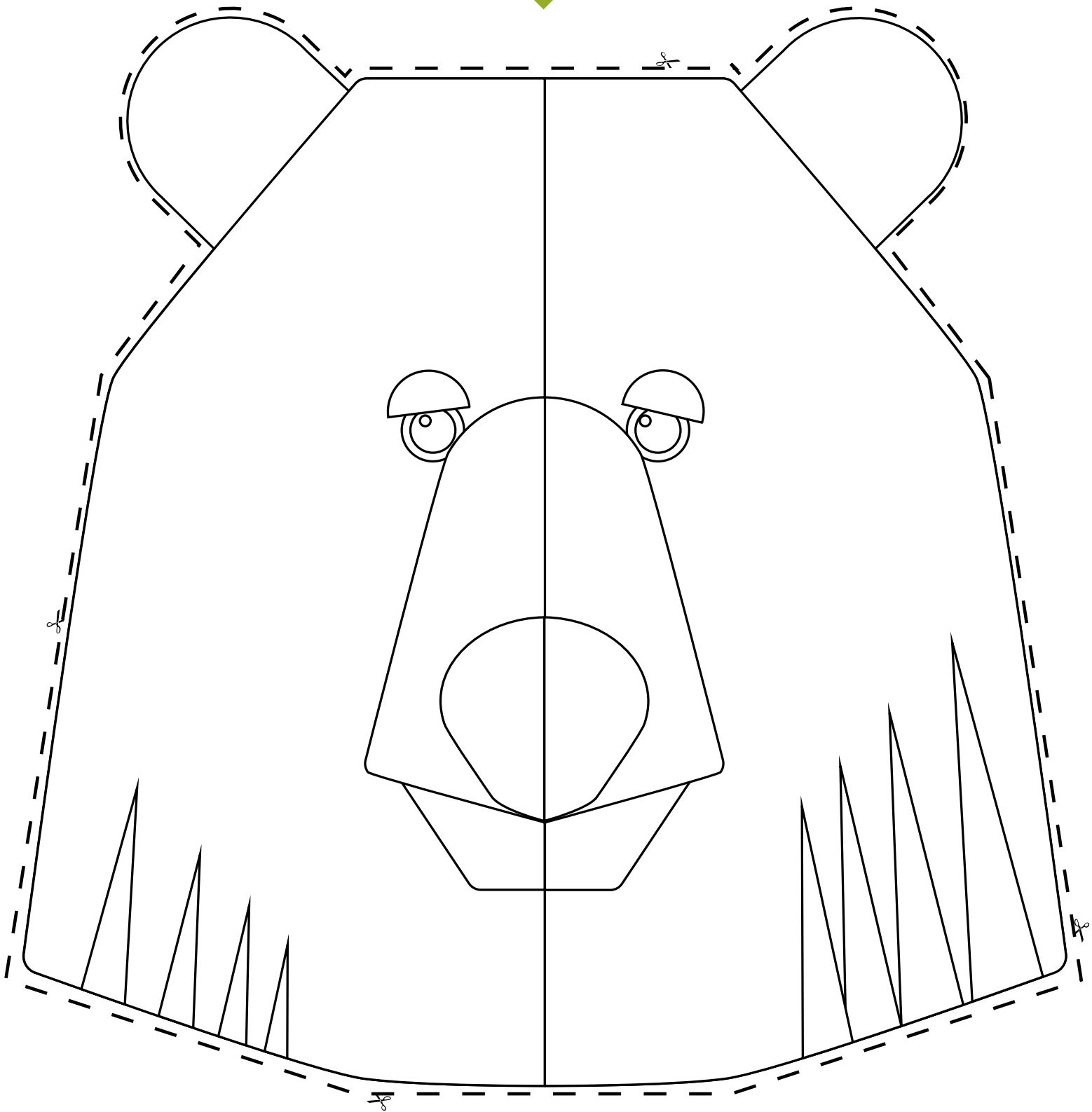


You will need:

- Colouring in pens, pencils or crayons
- Scissors
- Glue
- A4 sheet of cardboard
- Paper straw or lolly stick

Instructions:

- 1 Colour in your animal
- 2 Stick your animal to your sheet of cardboard
- 3 Cut along the dotted lines
- 4 Once cut out, use tape to secure your animal to a straw or lolly stick



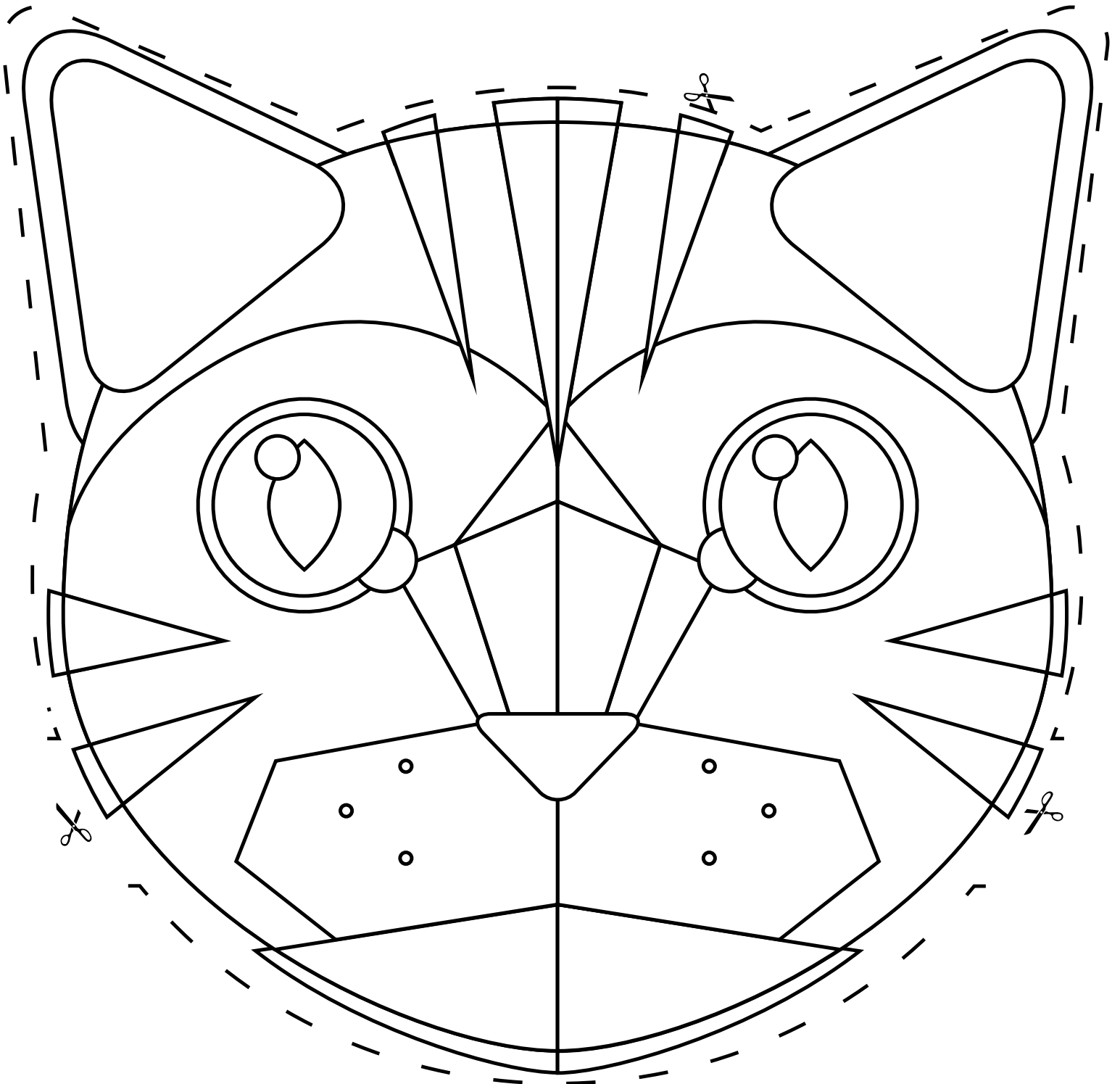


You will need:

- Colouring in pens, pencils or crayons
- Scissors
- Glue
- A4 sheet of cardboard
- Paper straw or lolly stick

Instructions:

- 1 Colour in your animal
- 2 Stick your animal to your sheet of cardboard
- 3 Cut along the dotted lines
- 4 Once cut out, use tape to secure your animal to a straw or lolly stick



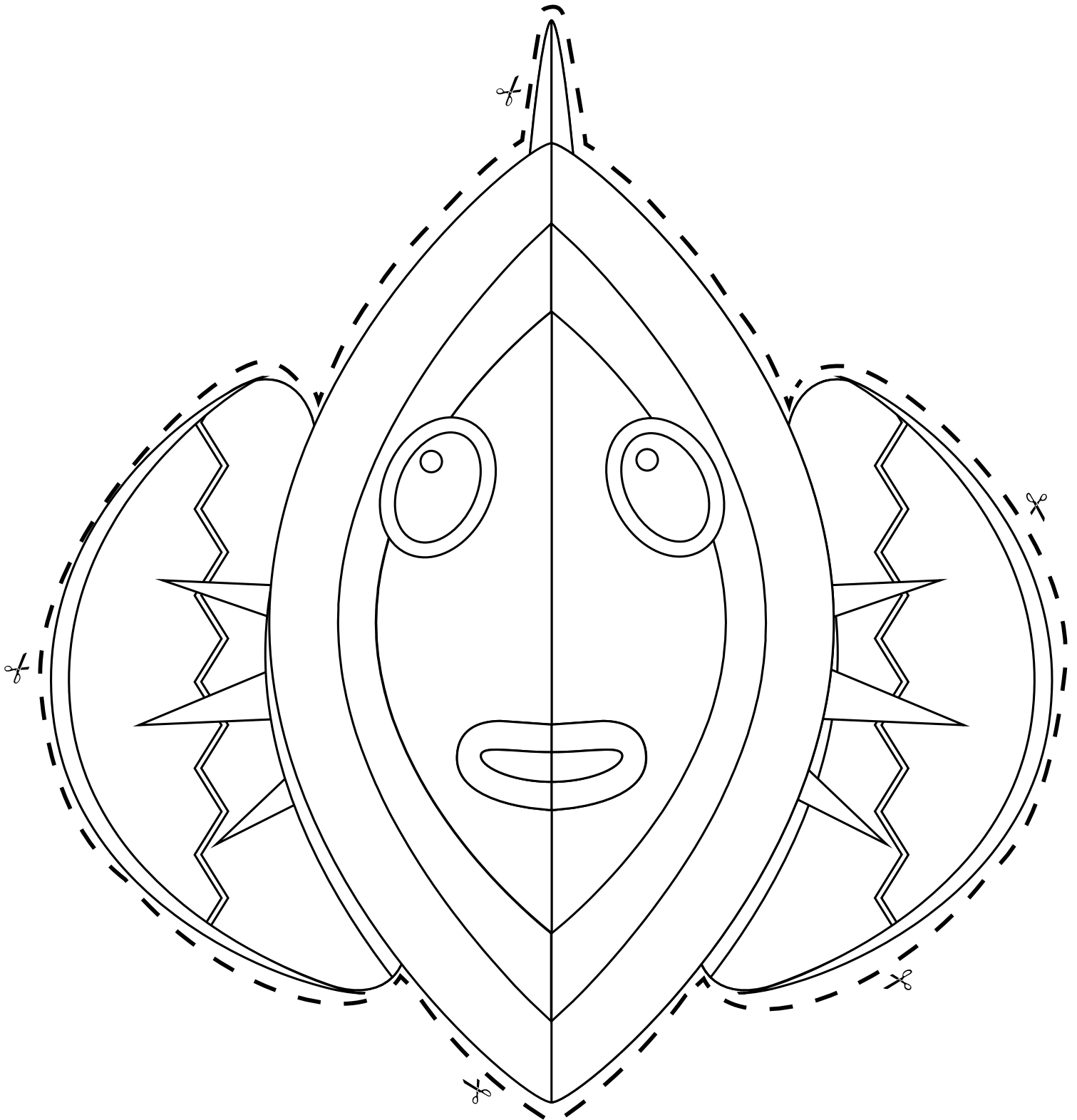


You will need:

- Colouring in pens, pencils or crayons
- Scissors
- Glue
- A4 sheet of cardboard
- Paper straw or lolly stick

Instructions:

- 1 Colour in your animal
- 2 Stick your animal to your sheet of cardboard
- 3 Cut along the dotted lines
- 4 Once cut out, use tape to secure your animal to a straw or lolly stick



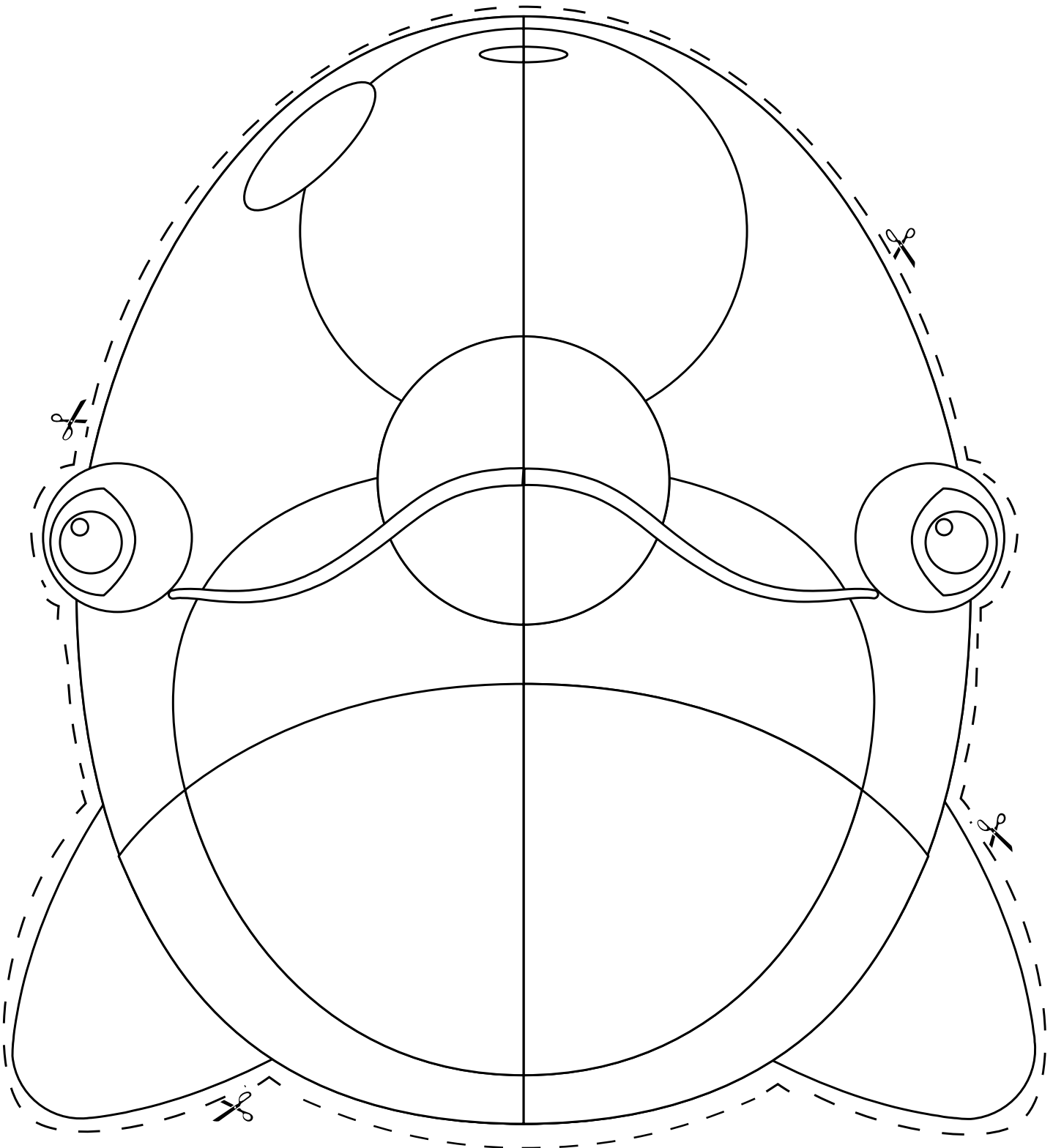


You will need:

- Colouring in pens, pencils or crayons
- Scissors
- Glue
- A4 sheet of cardboard
- Paper straw or lolly stick

Instructions:

- 1 Colour in your animal
- 2 Stick your animal to your sheet of cardboard
- 3 Cut along the dotted lines
- 4 Once cut out, use tape to secure your animal to a straw or lolly stick



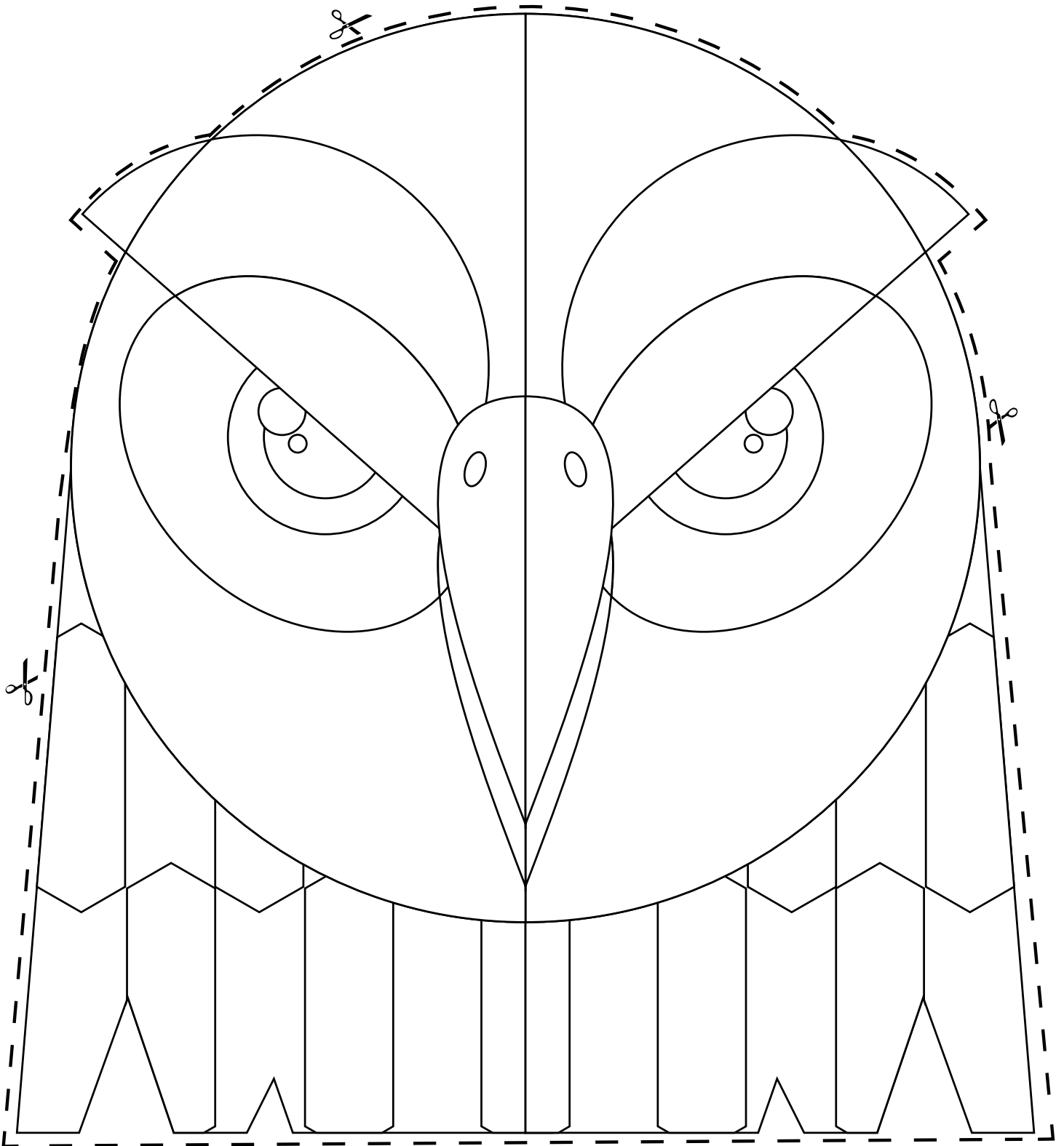


You will need:

- Colouring in pens, pencils or crayons
- Scissors
- Glue
- A4 sheet of cardboard
- Paper straw or lolly stick

Instructions:

- 1 Colour in your animal
- 2 Stick your animal to your sheet of cardboard
- 3 Cut along the dotted lines
- 4 Once cut out, use tape to secure your animal to a straw or lolly stick



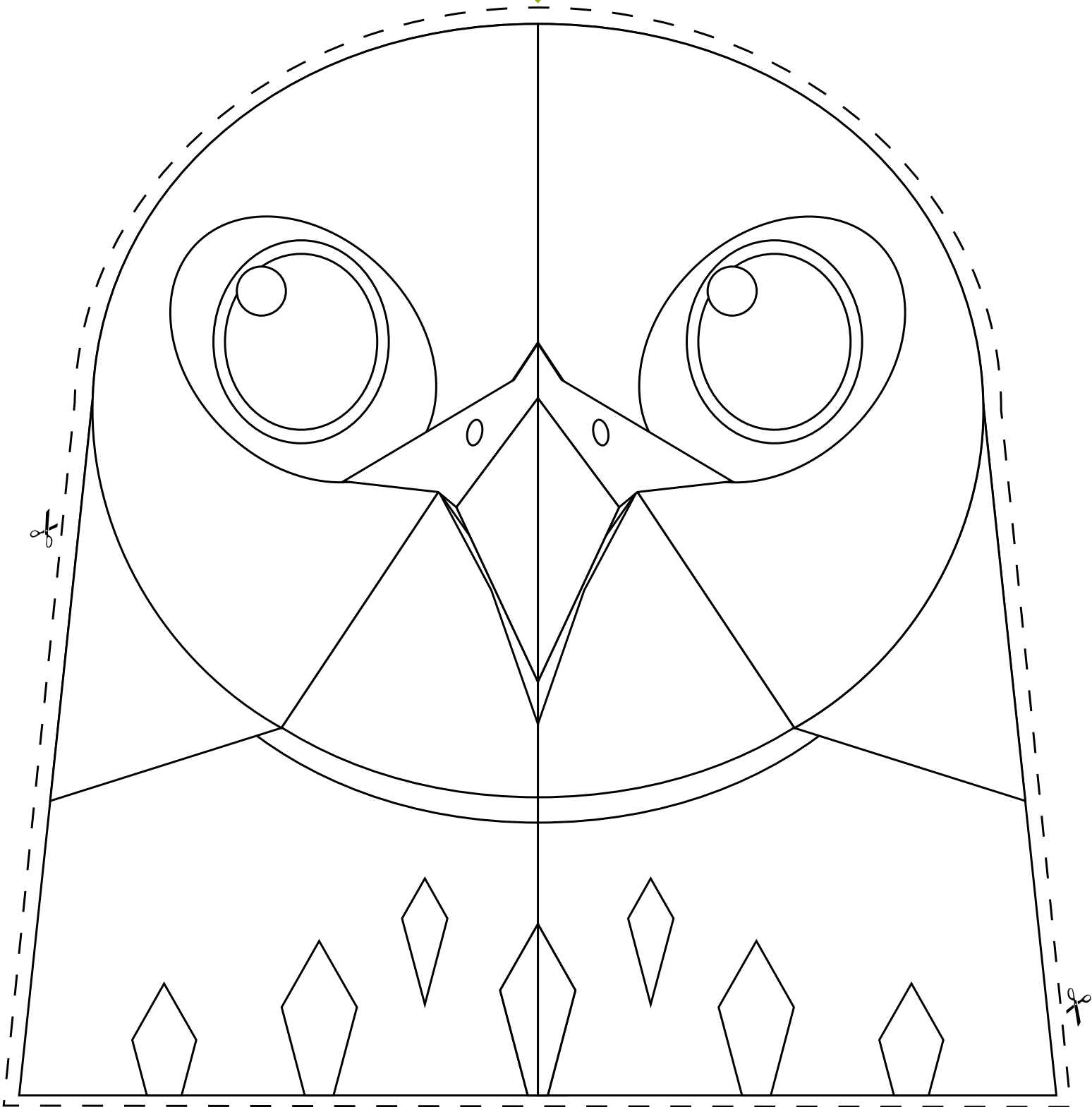


You will need:

- Colouring in pens, pencils or crayons
- Scissors
- Glue
- A4 sheet of cardboard
- Paper straw or lolly stick

Instructions:

- 1 Colour in your animal
- 2 Stick your animal to your sheet of cardboard
- 3 Cut along the dotted lines
- 4 Once cut out, use tape to secure your animal to a straw or lolly stick



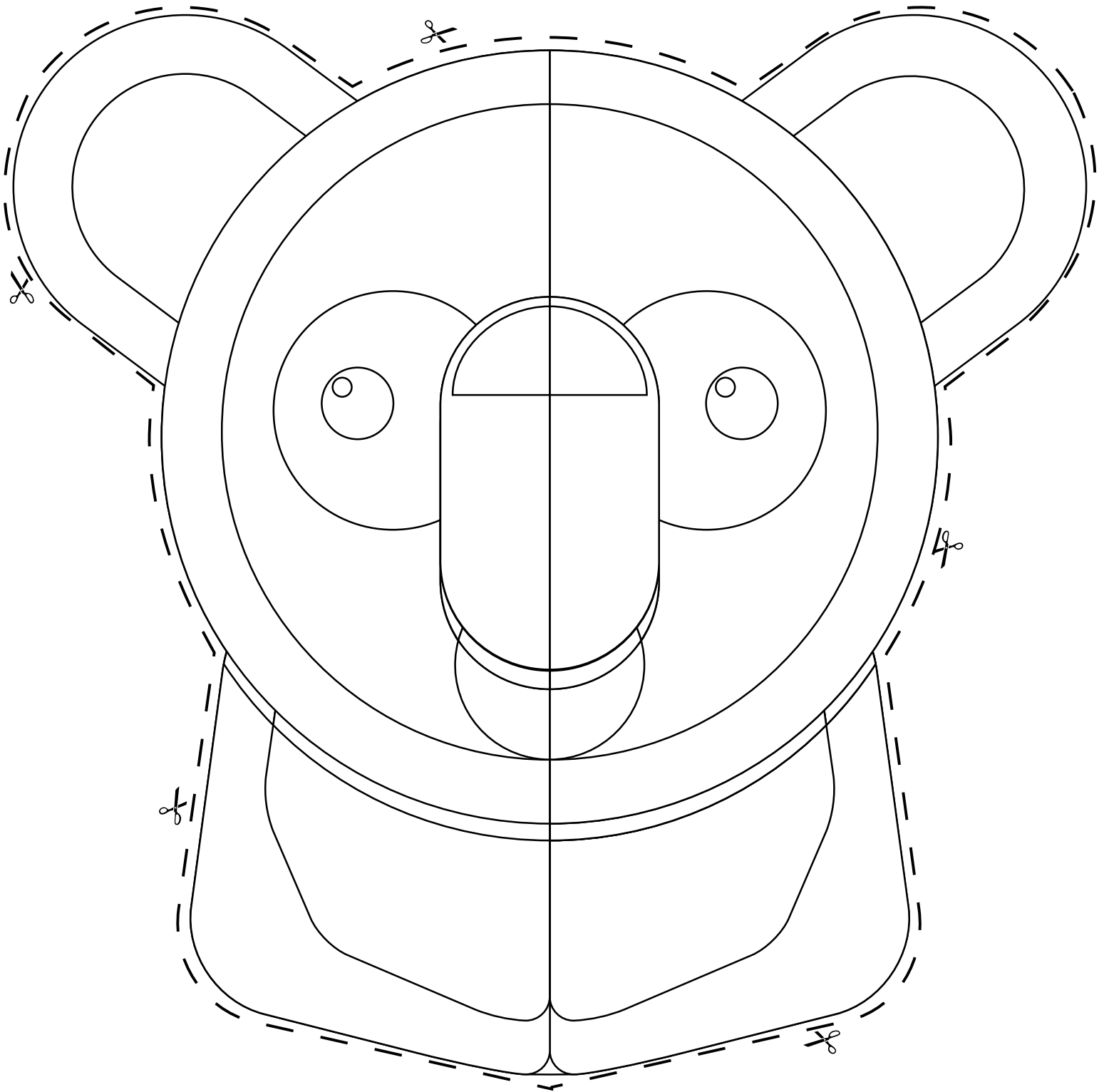


You will need:

- Colouring in pens, pencils or crayons
- Scissors
- Glue
- A4 sheet of cardboard
- Paper straw or lolly stick

Instructions:

- 1 Colour in your animal
- 2 Stick your animal to your sheet of cardboard
- 3 Cut along the dotted lines
- 4 Once cut out, use tape to secure your animal to a straw or lolly stick



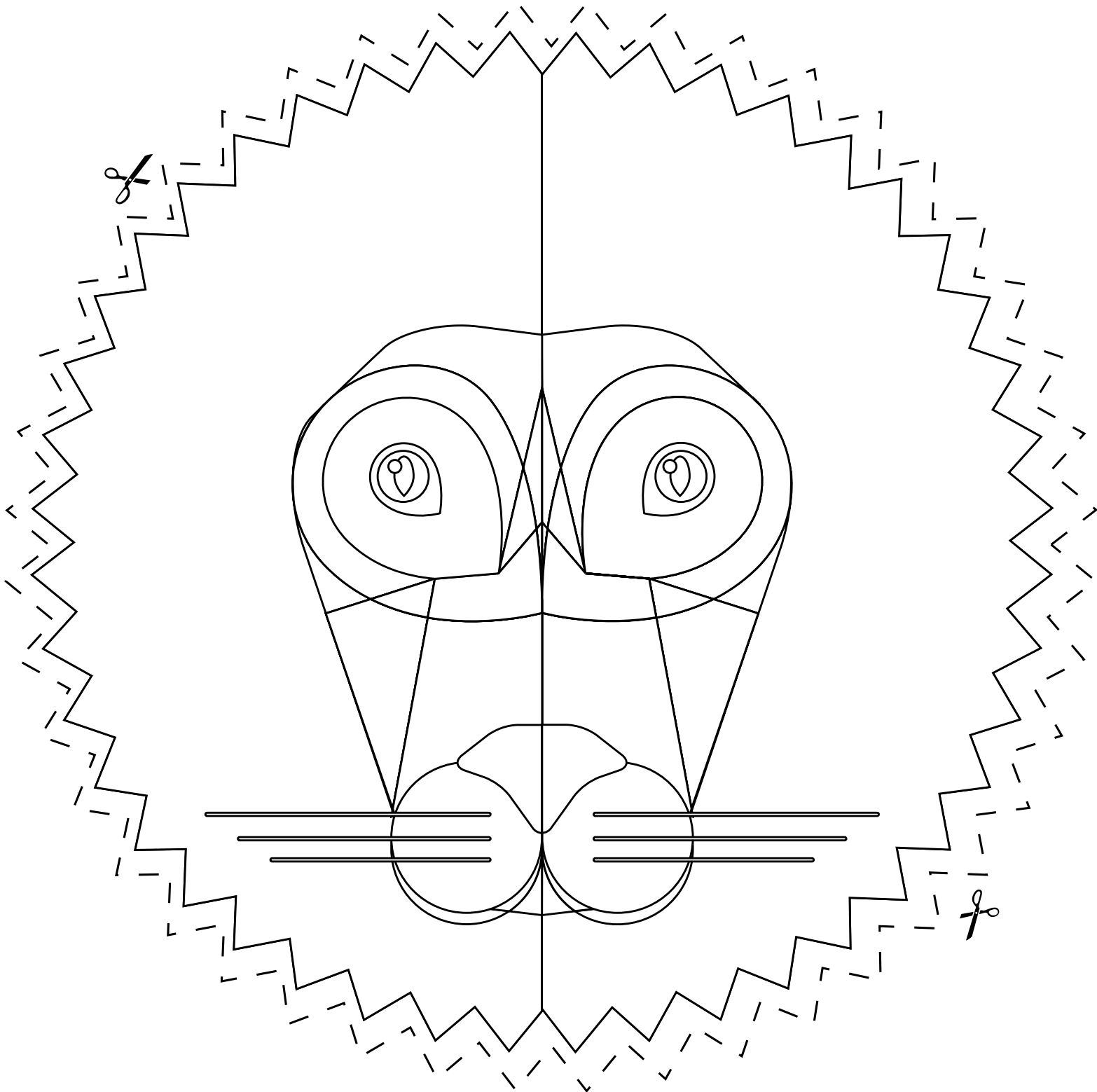


You will need:

- Colouring in pens, pencils or crayons
- Scissors
- Glue
- A4 sheet of cardboard
- Paper straw or lolly stick

Instructions:

- 1 Colour in your animal
- 2 Stick your animal to your sheet of cardboard
- 3 Cut along the dotted lines
- 4 Once cut out, use tape to secure your animal to a straw or lolly stick



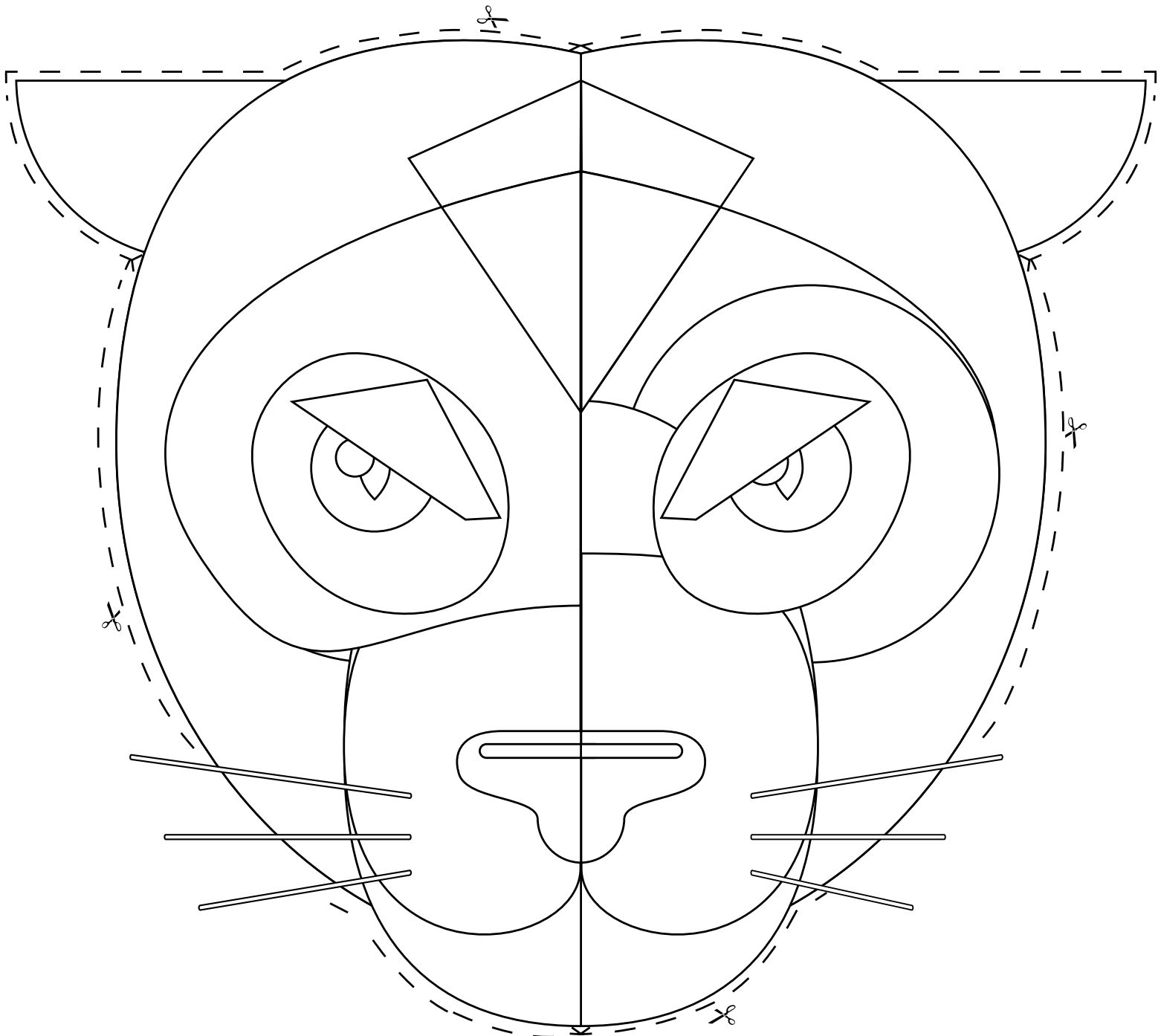


You will need:

- Colouring in pens, pencils or crayons
- Scissors
- Glue
- A4 sheet of cardboard
- Paper straw or lolly stick

Instructions:

- 1 Colour in your animal
- 2 Stick your animal to your sheet of cardboard
- 3 Cut along the dotted lines
- 4 Once cut out, use tape to secure your animal to a straw or lolly stick



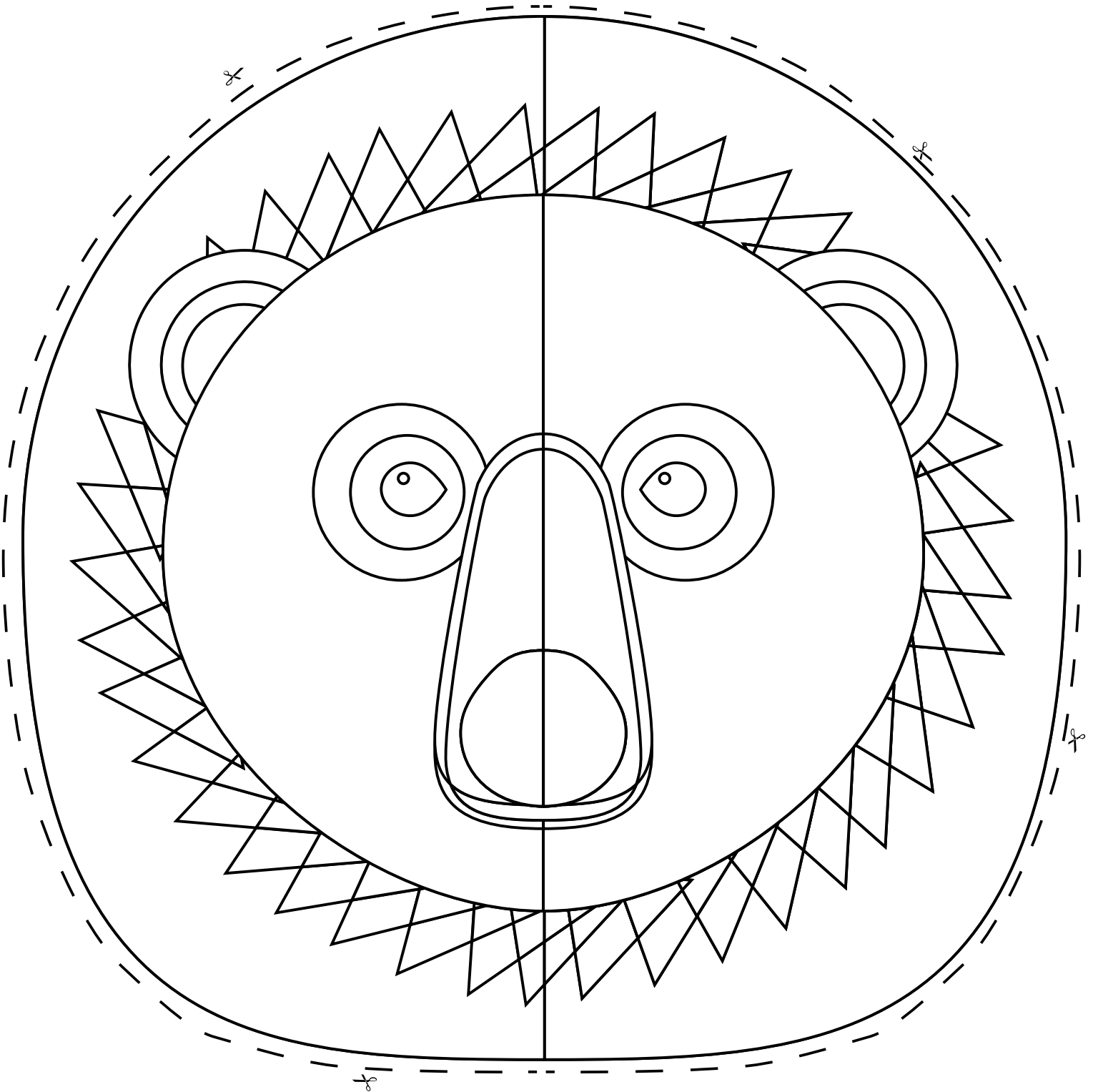


You will need:

- Colouring in pens, pencils or crayons
- Scissors
- Glue
- A4 sheet of cardboard
- Paper straw or lolly stick

Instructions:

- 1 Colour in your animal
- 2 Stick your animal to your sheet of cardboard
- 3 Cut along the dotted lines
- 4 Once cut out, use tape to secure your animal to a straw or lolly stick



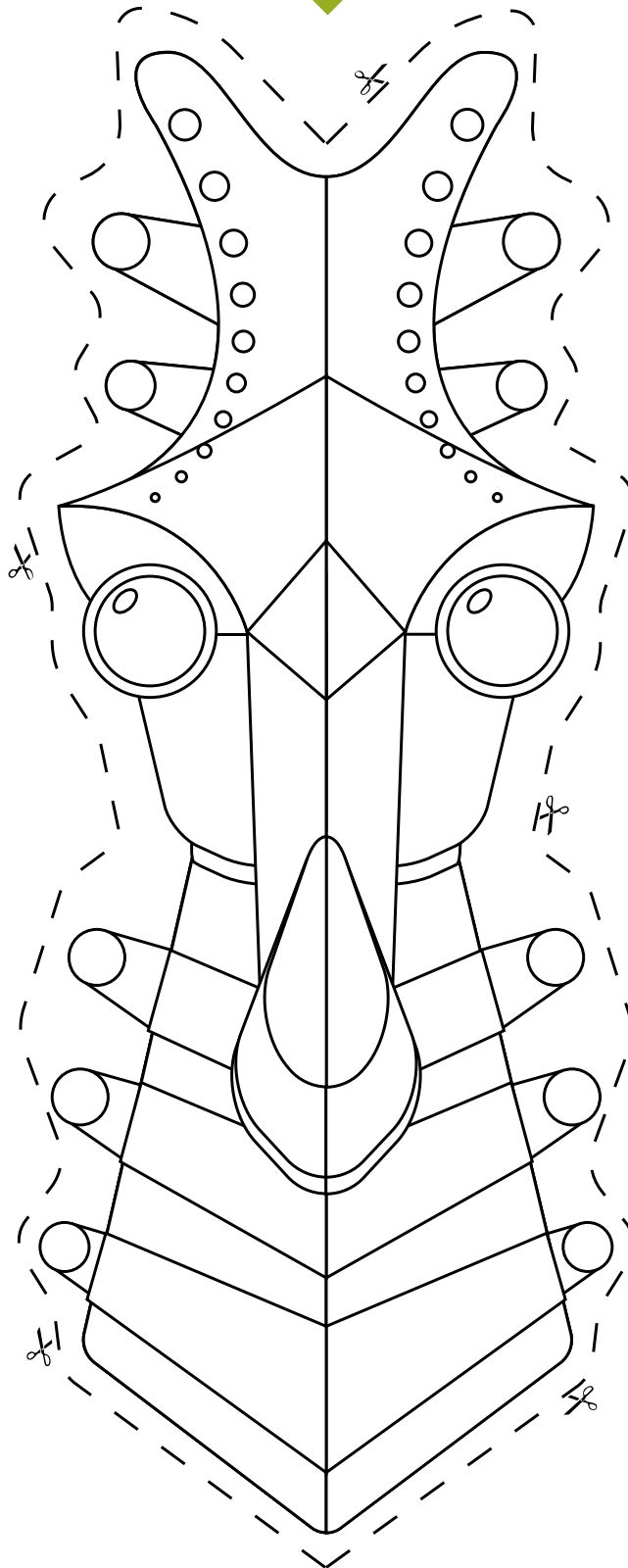


You will need:

- Colouring in pens, pencils or crayons
- Scissors
- Glue
- A4 sheet of cardboard
- Paper straw or lolly stick

Instructions:

- 1 Colour in your animal
- 2 Stick your animal to your sheet of cardboard
- 3 Cut along the dotted lines
- 4 Once cut out, use tape to secure your animal to a straw or lolly stick



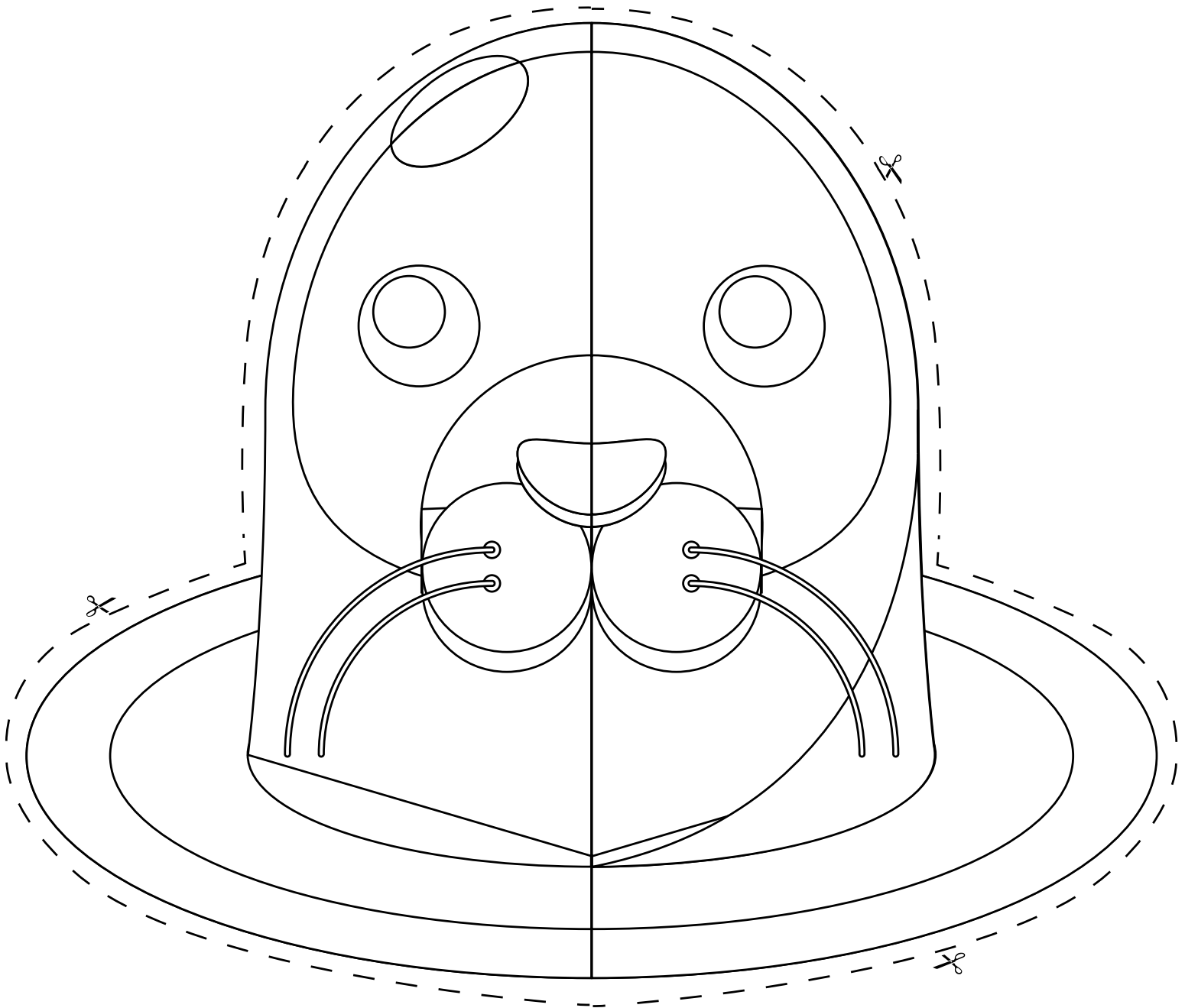


You will need:

- Colouring in pens, pencils or crayons
- Scissors
- Glue
- A4 sheet of cardboard
- Paper straw or lolly stick

Instructions:

- 1 Colour in your animal
- 2 Stick your animal to your sheet of cardboard
- 3 Cut along the dotted lines
- 4 Once cut out, use tape to secure your animal to a straw or lolly stick



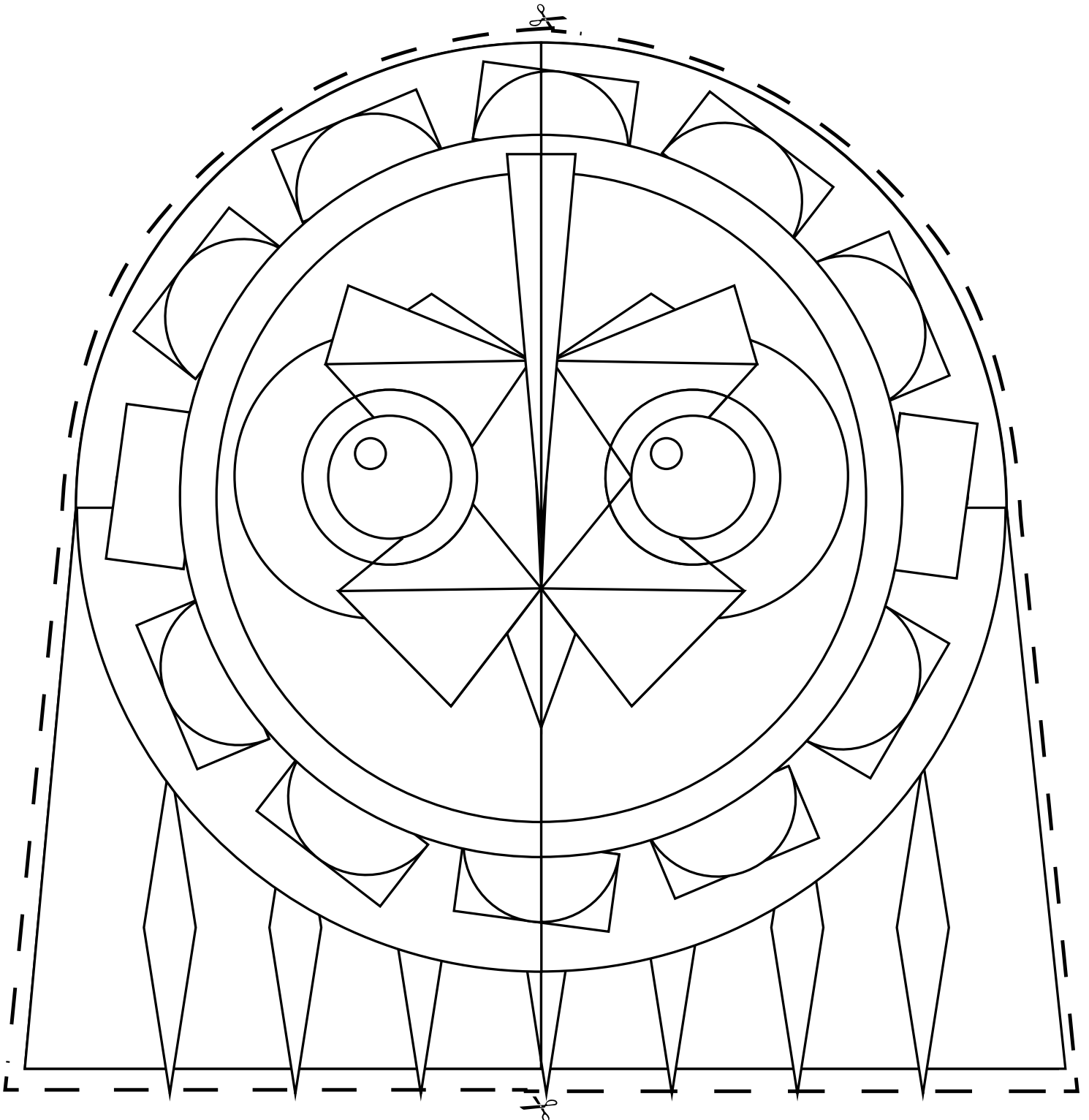


You will need:

- Colouring in pens, pencils or crayons
- Scissors
- Glue
- A4 sheet of cardboard
- Paper straw or lolly stick

Instructions:

- 1 Colour in your animal
- 2 Stick your animal to your sheet of cardboard
- 3 Cut along the dotted lines
- 4 Once cut out, use tape to secure your animal to a straw or lolly stick



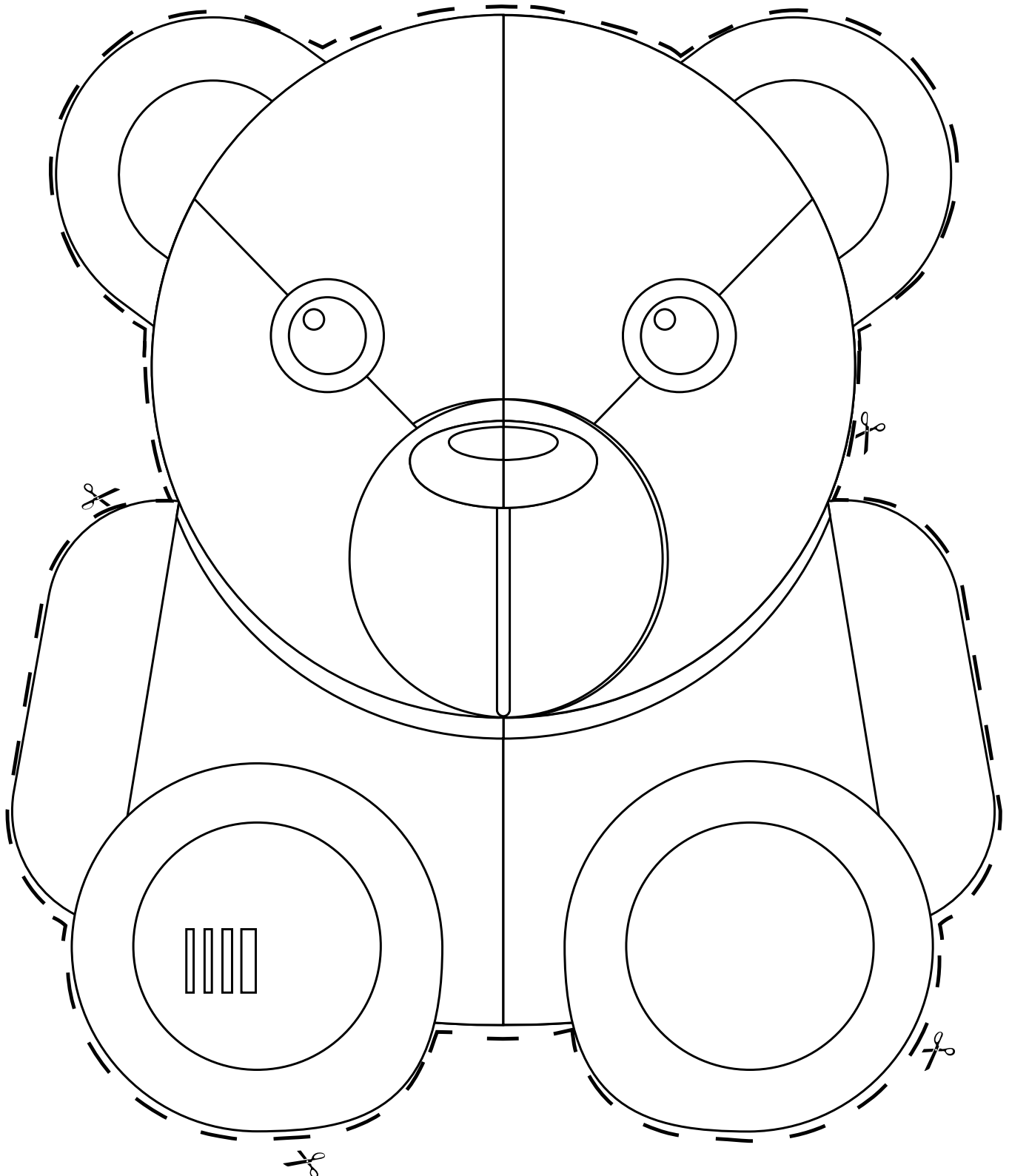


You will need:

- Colouring in pens, pencils or crayons
- Scissors
- Glue
- A4 sheet of cardboard
- Paper straw or lolly stick

Instructions:

- 1 Colour in your animal
- 2 Stick your animal to your sheet of cardboard
- 3 Cut along the dotted lines
- 4 Once cut out, use tape to secure your animal to a straw or lolly stick





You will need:

- Colouring in pens, pencils or crayons
- Scissors
- Glue
- A4 sheet of cardboard
- Paper straw or lolly stick

Instructions:

- 1 Colour in your animal
- 2 Stick your animal to your sheet of cardboard
- 3 Cut along the dotted lines
- 4 Once cut out, use tape to secure your animal to a straw or lolly stick

